



IES FLOOD REPORT
PHOTOMETRIC FILENAME : LLI010709C.IES

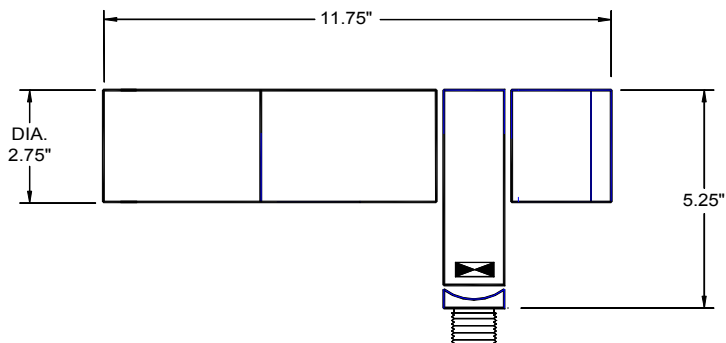
DESCRIPTIVE INFORMATION (From Photometric File)

IESNA:LM-63-2002
[TEST] LLI 0107-09C
[TESTLAB] LIGHT LABORATORY INC
[ISSUE DATE] 1/17/2007
[MANUFAC] HK LIGHTING GROUP
[LUMCAT] ZX20i-T439-WIDE
[LUMINAIRE] 2-3/4"DIA. X 11-3/4"L. X 5-1/4"H. ACCENT & AREA LUMINAIRE
[MORE] SPUN ALUMINUM WIDE BEAM SPREAD REFLECTOR
[MORE] TEMPERED GLASS LENS
[BALLASTCAT] ADVANCE RMH-39-K-LF
[BALLAST] 120V 50/60Hz ELECTRONIC
[LAMPPOSITION] 0,0
[LAMPCAT] PHILIPS CDM35/T6/830
[LAMPLUM] 3300
[INPUT] 120VAC, 43.99W

Note: Candela values converted from Type-C to Type-B

CHARACTERISTICS

IES NEMA Type	5 H x 5 V
Maximum Candela	1389
Maximum Candela Angle	0H 0V
Horizontal Beam Angle (50%)	64.8
Vertical Beam Angle (50%)	64.8
Horizontal Field Angle (10%)	98.0
Vertical Field Angle (10%)	98.0
Total Rated Lamp Lumens	3300
Beam Lumens	948.85
Beam Efficiency	28.75%
Field Lumens	1372.29
Field Efficiency	41.58%
Total Lumens	1474.03
Total Efficiency	44.67%



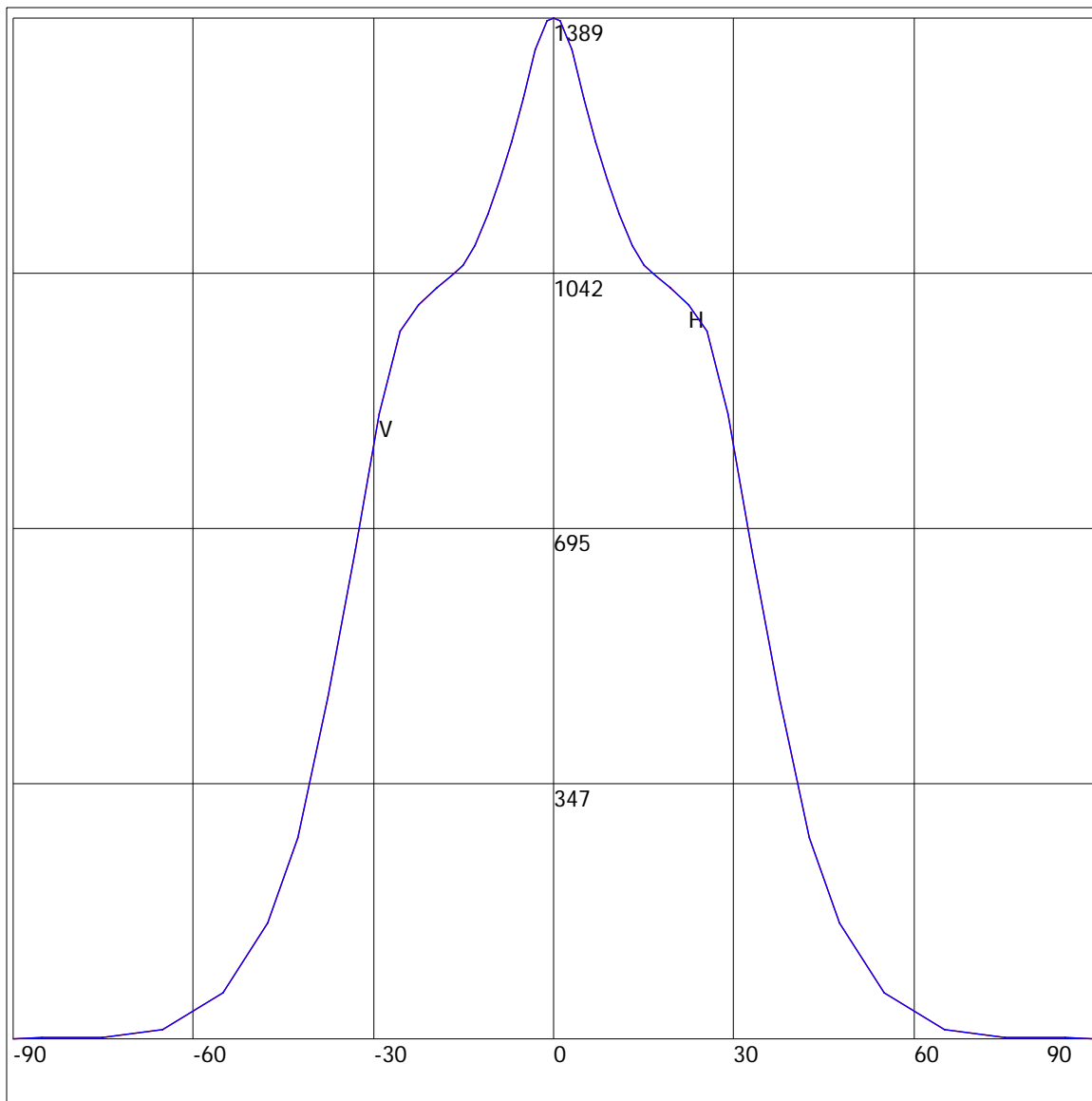
NOTE: ALL TESTS ASSUME BALLAST FACTOR (BF) = 1.0 UNLESS STATED.
IF TEST OR OTHER BALLAST USED HAS A BF OTHER THAN 1.0, ALL
LUMEN, CANDELA, AND LUMINANCE VALUES SHOULD BE MULTIPLIED BY
THE BF, CU, EFFICIENCY AND % FLUX VALUES REMAIN AS LISTED.
TOTAL WATTS VALUE APPLIES ONLY TO TESTED BALLAST.

IES FLOOD REPORT
PHOTOMETRIC FILENAME : LLI010709C.IES

AXIAL CANDELA

DEG.	HOR.	DEG.	VERT.
90	0	90	0
85	2	85	2
75	2	75	2
65	13	65	13
55	64	55	64
47.5	158	47.5	158
42.5	274	42.5	274
37.5	466	37.5	466
33	666	33	666
29	851	29	851
25.5	963	25.5	963
22.5	999	22.5	999
19.5	1022	19.5	1022
17	1038	17	1038
15	1052	15	1052
13	1080	13	1080
11	1122	11	1122
9	1169	9	1169
7	1220	7	1220
5	1280	5	1280
3	1346	3	1346
1	1386	1	1386
0	1389	0	1389
-1	1386	-1	1386
-3	1346	-3	1346
-5	1280	-5	1280
-7	1220	-7	1220
-9	1169	-9	1169
-11	1122	-11	1122
-13	1080	-13	1080
-15	1052	-15	1052
-17	1038	-17	1038
-19.5	1022	-19.5	1022
-22.5	999	-22.5	999
-25.5	963	-25.5	963
-29	851	-29	851
-33	666	-33	666
-37.5	466	-37.5	466
-42.5	274	-42.5	274
-47.5	158	-47.5	158
-55	64	-55	64
-65	13	-65	13
-75	2	-75	2
-85	2	-85	2
-90	0	-90	0

AXIAL CANDELA DISPLAY

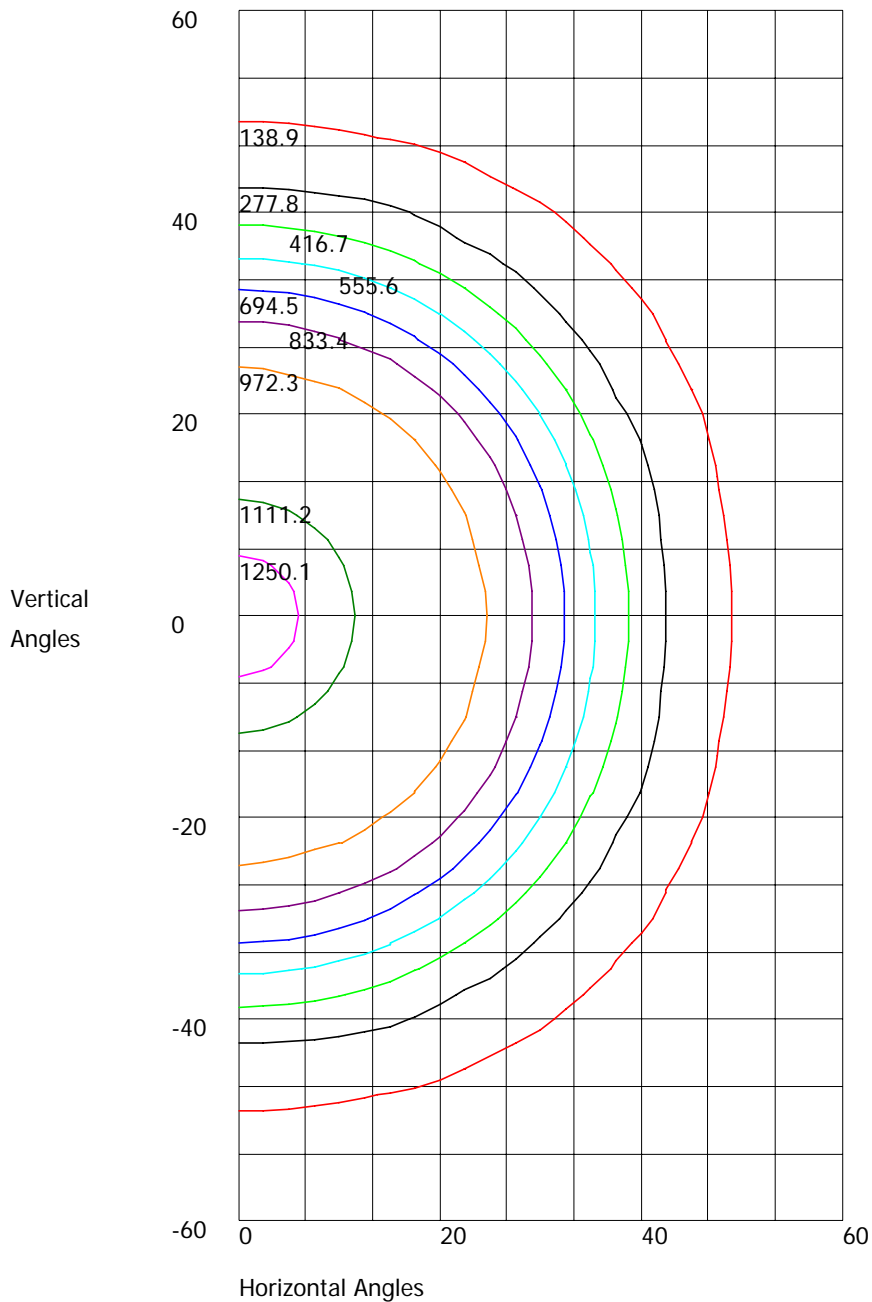


Maximum Candela = 1389 Located At Horizontal Angle = 0, Vertical Angle = 0

H - Horizontal Axial Candela

V - Vertical Axial Candela

ISOCANDELA CURVES



Maximum Candela = 1389 Located At Horizontal Angle = 0, Vertical Angle = 0
50% Maximum Candela = 694.5
10% Maximum Candela = 138.9