

# LIGHT LABORATORY, INC.

8165 E Kaiser Blvd. Anaheim, CA 92808

SHT 1 OF 1

Test #: L0410-3002

Date: 5/3/2010

## Luminaire Photometric Performance LM-79-2008

Manufacturer:	HK LIGHTING GROUP INC.
Model Number:	ZXLI-4.0-MEDIUM

Total Lumens:	405.09
Input Power (W):	17.15
Input Current (Amp):	0.28
Input Power Factor:	0.52
Efficacy:	23.62
Color Rendering Index ( CRI ):	88.5
Correlated Color Temperature ( CCT ):	4213
Chromaticity Ordinate x:	0.369
Chromaticity Ordinate y:	0.363

\*Test data documentation on file and available upon request.

\*All results in accordance to IESNA LM-79-2008: Approved Method for the Electrical and Photometric Testing of Solid-State Lighting.

A					JS	5/3/10
REV.	LOG NUMBER	REVISION DESCRIPTION	REVISION BY	CHECKED BY	APPROVED BY	DATE



**IES FLOOD REPORT  
PHOTOMETRIC FILENAME : L04103102.IES**

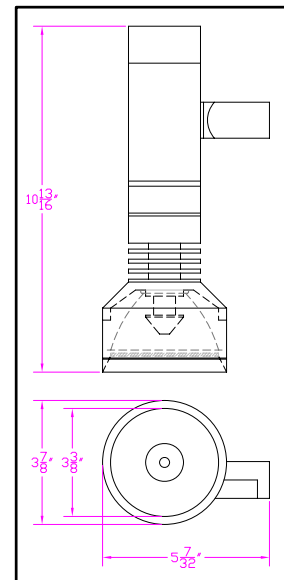
**DESCRIPTIVE INFORMATION (From Photometric File)**

IESNA:LM-63-2002  
[TEST] L0410-3102  
[TESTLAB] LIGHT LABORATORY INC  
[ISSUEDATE] 5/3/2010  
[MANUFAC] HK LIGHTING GROUP INC.  
[LUMCAT] ZXLI-4.0-MEDIUM  
[LUMINAIRE] 3-7/8"DIA. X 10-13/16"H. AREA/ACCENT LED FIXTURE  
[MORE] MEDIUM ANGLE REFLECTOR  
[MORE] 6 WARM WHITE LEDS, FLAT TEMPERED GLASS  
[LAMPPOSITION] 0,0  
[LAMPCAT] WARM WHITE LED  
[OTHER] INDICATING THE CANDELA VALUES ARE ABSOLUTE AND  
[MORE] SHOULD NOT BE FACTORED FOR DIFFERENT LAMP RATINGS.  
[INPUT] 120VAC, 17.15W  
[TEST PROCEDURE] IESNA:LM-79-08

Note: Candela values converted from Type-C to Type-B

**CHARACTERISTICS**

IES NEMA Type	4 H x 4 V
Maximum Candela	1055
Maximum Candela Angle	-7H -1V
Horizontal Beam Angle (50%)	34.3
Vertical Beam Angle (50%)	31.5
Horizontal Field Angle (10%)	56.1
Vertical Field Angle (10%)	54.7
Lumens Per Lamp	N.A. (absolute)
Total Lamp Lumens	N.A. (absolute)
Beam Lumens	238
Beam Efficiency	N.A.
Field Lumens	351
Field Efficiency	N.A.
Spill Lumens	54
Luminaire Lumens	405
Total Efficiency	N.A.
Total Luminaire Watts	17.15
Ballast Factor	1.00

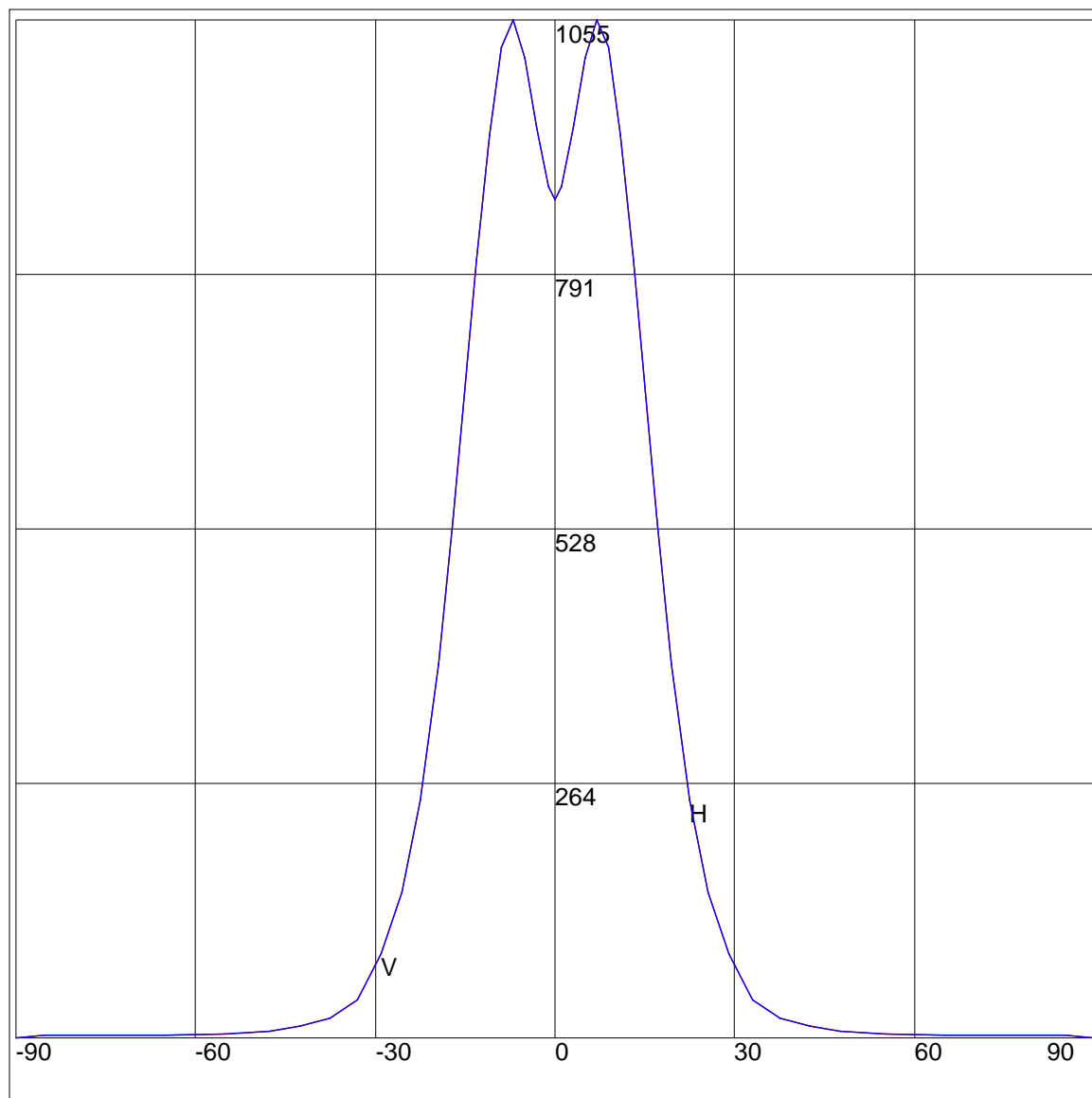


IES FLOOD REPORT  
PHOTOMETRIC FILENAME : L04103102.IES

AXIAL CANDELA

DEG.	HOR.	DEG.	VERT.
90	0	90	0
85	3	85	3
75	3	75	3
65	4	65	4
55	5	55	5
47.5	8	47.5	8
42.5	13	42.5	13
37.5	21	37.5	21
33	40	33	40
29	88	29	88
25.5	152	25.5	152
22.5	246	22.5	246
19.5	388	19.5	388
17	537	17	537
15	670	15	670
13	807	13	807
11	936	11	936
9	1027	9	1027
7	1055	7	1055
5	1016	5	1016
3	943	3	943
1	882	1	882
0	869	0	869
-1	882	-1	882
-3	943	-3	943
-5	1016	-5	1016
-7	1055	-7	1055
-9	1027	-9	1027
-11	936	-11	936
-13	807	-13	807
-15	670	-15	670
-17	537	-17	537
-19.5	388	-19.5	388
-22.5	246	-22.5	246
-25.5	152	-25.5	152
-29	88	-29	88
-33	40	-33	40
-37.5	21	-37.5	21
-42.5	13	-42.5	13
-47.5	8	-47.5	8
-55	5	-55	5
-65	4	-65	4
-75	3	-75	3
-85	3	-85	3
-90	0	-90	0

AXIAL CANDELA DISPLAY

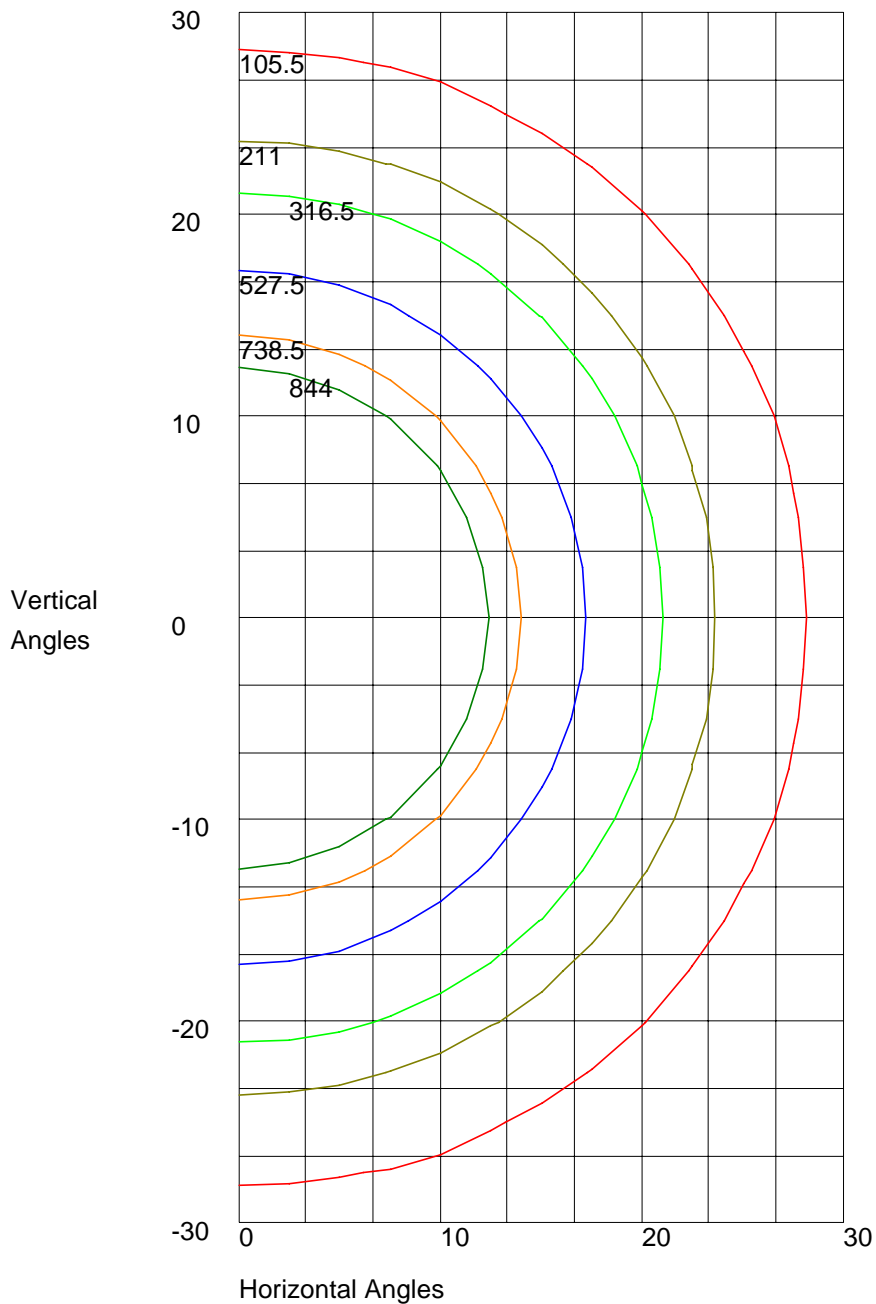


Maximum Candela = 1055 Located At Horizontal Angle =-7, Vertical Angle =-1

H - Horizontal Axial Candela

V - Vertical Axial Candela

ISOCANDELA CURVES



Maximum Candela = 1055 Located At Horizontal Angle = -7, Vertical Angle = -1  
50% Maximum Candela = 527.5  
10% Maximum Candela = 105.5