

ET

Accessory . Extesion Series

Product Features

- T-bar aluminum extrusion for twin head mounting.



Specification

Materials: Machined from billet 6061-T6 corrosion resistant aluminum. Available in 304/316 stainless steel or 360 brass upon request.

Mounting: Accepts all 1/2"-14 NPS male fitting.

Finish: Polyester powder coat with RoHS compliant procedures.

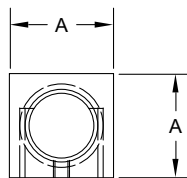
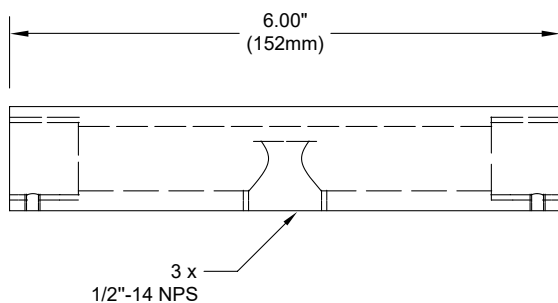
Ordering Guide

EXAMPLE: ET - 11 - BZ

SERIES	MODEL	FINISH
ET	-	-
	11	BK BLACK POWDER COAT
	16	BZ BRONZE POWDER COAT
	20	WT WHITE POWDER COAT
	30	ABK ANODIZED BLACK
		ACL ANODIZED CLEAR
		CC CUSTOM POWDER COAT
		NBR NATURAL BRASS
		NSS NATURAL STAINLESS STEEL

Product Drawings

NOTE: Specification and dimensions subject to change without notice.



Model	Width(A)
11	.88" (22mm)
16	1.13" (29mm)
20	1.25" (32mm)
30	1.50" (38mm)