

## ZXG16/ZXG16-SOi

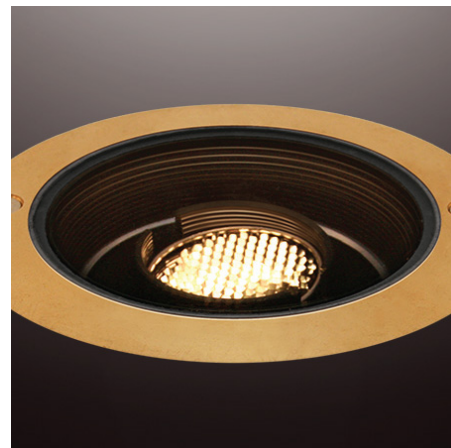
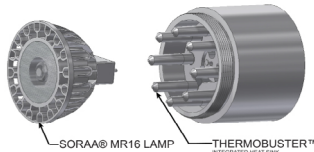
In-grade . ZXG Series



### Product Features

- Brass in-grade fixture with superior corrosion resistance.
- ETL outdoor wet location listed. IP67 standard.
- Built-in optic accessory holder.
- Easy-Lock Aiming Mechanism allows 360° Horizontal and 30° vertical adjustability.
- US patented integral SORAA® heat sink.

**Integral SORAA® Heat Sink:** US patented Thermobuster™ provides extra heat dissipation that reduces the lamp junction temperature by 77°F(25°C). Enables even the highest wattage SORAA® lamps to be used in an enclosed fixture without sacrificing its performance or life expectancy.



### Specification

**Materials:**  
 Housing: Die-cast brass.  
 Lamp holder and Aiming Assembly: Machined from billet 6061-T6 corrosion resistant aluminum.  
 Hardware: 304 stainless steel hardware.

**Light Source:** MR16 Halogen lamp or MR16 SORAA® LED lamp. Please refer to [SORAA MR16 GUS-3](#) for lamp selection.

**Voltage:** 12V AC/DC. Requires remote step down transformer.

**Wattage:** Max. 9W for SORAA MR16 lamp with Thermobuster. Max. 50W for halogen MR16 without Thermobuster.

**Lamp Base/Socket:** Standard bi-pin socket for GU5.3/G4/GX5.3/GY6.35/GZ4.

**Dimmability:** MLV or ELV. Please refer to website for SORAA® MR16 dimmer compatibility. [SORAA MR16 dimmer compatibility](#).

**Finish:** Standard is natural brass. Also available in nickel plating(NP), or BLACK OXIDE(BKO) on top bezels.

**Optical Accessories:** Accepts up to 3 accessory pieces (hexcel louver, optical lenses, dichroic color filters, etc.). Secured in place with metal snap ring.

### Ordering Guide

EXAMPLE: ZXG16-SOi - 00917 - 12V - NBR - LVR - GC

SERIES	OPTIONAL LAMP	VOLTAGE	FINISH	OPTIONAL SELECT UP TO 3 OPTIC ACCESSORIES	OPTIONAL ACCESSORIES
ZXG16 HALOGEN	0-NONE  XXXXX SORAA® LAMP CODE (5 DIGIT SORAA CAT. NO*)	12V	Standard NBR Natural Brass Premium NP Nickel Plated BKO Black Oxide	LVR Hexcel Louver OSL Overall Spread Lens LSL Linear Spread Lens SOL Solite Soft Focus DF Dichroic Filter	See page 2 for quick reference, or <a href="#">"Accessories"</a> link for detailed specification
ZXG16-SOi SORAA®					

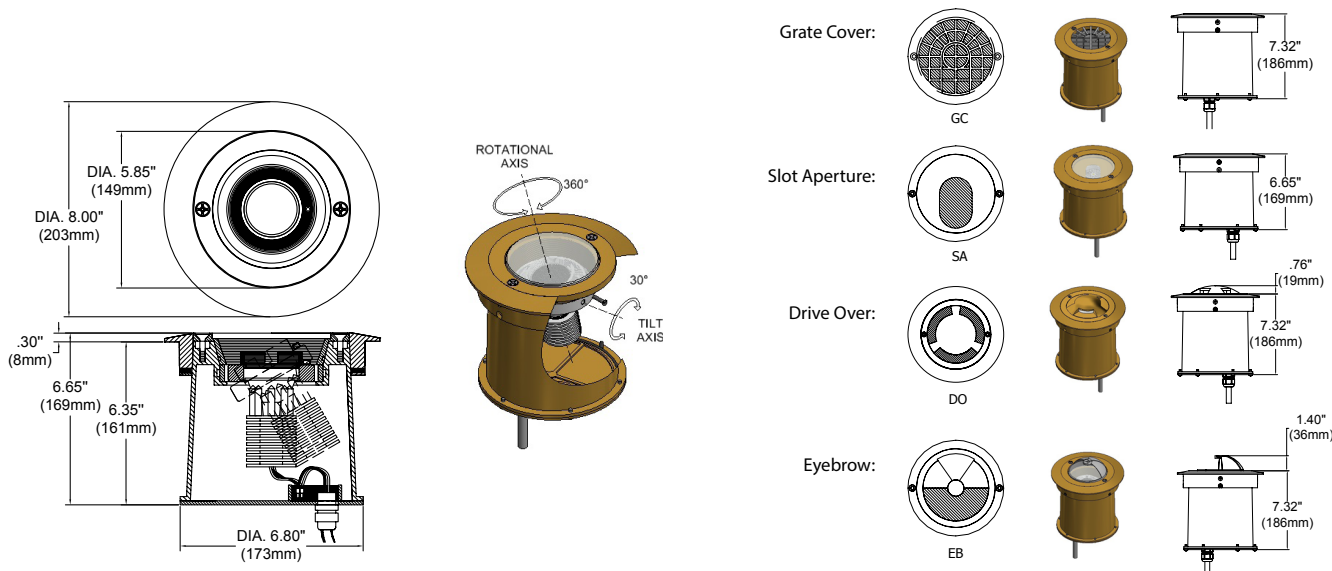
\*SORAA® Lamp Selection :  
[SORAA MR16 GUS-3](#)

Remote Step Down Transformer (Optional).  
 See ["Accessories"](#) link for detailed specification.

Model	Wattage(VA)	Primary Voltage(VAC)	Secondary Volt(VAC)	Dimming Method	Characters
TXM	20 40 60 100 150 300	120 or 277	12	MLV	Outdoor, Wall Mount, Compact
TXS	150 300 600	120	Multi-tap of 12, 13, 14, 15 VAC	MLV	Outdoor, Wall mount, Stainless Steel Casel
IGT	50(120V only) 100 300 600	120 or 277	12	MLV	In-grade
TXE	60	120, 230, or 277	12	ELV	Needs Enclosure, 6ft working distance

### Product Drawings

NOTE: Specification and dimensions subject to change without notice.



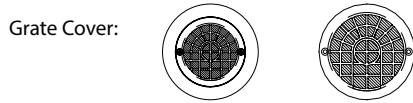
**Photometry & Energy Data**

---

All SORAA® MR16 GU5.3 base lamps can be used in this fixture.  
Please refer to SORAA® website: [SORAA MR16 GU5-3](http://www.soraa.com/SORAA-MR16-GU5-3)

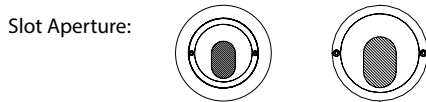
**Accessories**

---



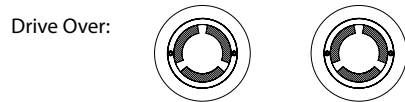
Fixture With GC

GC



Fixture With SA

SA



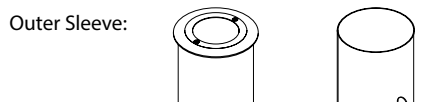
Fixture With DO

DO



Fixture With EB

EB



Fixture With OS

OS

**Notes**