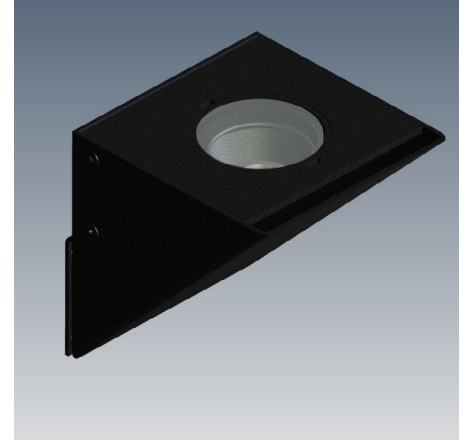


ZXL-WM-TRI-4.5X4.5

LED Wall Mount . ZXL Series



Product Features

- Wall mount up light or down light with mounting canopy.
- ETL outdoor wet location listed. IP65 standard.
- Machined from solid billet 6061-T6 corrosion resistant aluminum.
- Available in turtle friendly amber model.

Specification

Materials: Machined from billet 6061-T6 corrosion resistant aluminum with 304 stainless steel hardware. Available in 304/316 stainless steel or 360 brass upon request.

Voltage: 120~277V AC with integral LED driver.

Wattage: 10 or 14W Nichia LED.

Light Source: CRI 83. Available in CRI95 upon request. The chromaticity range is within a 3-step McAdam Ellipse. Standard CCT options are 2700K, 3000K, 4000K. RGBW.

Dimmability: 0-10V dimming, phase dimming @120V.

Finish: Polyester powder coat on all aluminum materials with RoHS compliant procedures. Anodized finish is available. Stainless steel and brass models are provided with brushed surface.

Optical Accessories: Accepts up to 3 accessories (hexcel louver, optical lenses, dichroic color filters, etc.). Secured in place with metal snap ring.

Mounting Accessory: Utilizes 2x 8-32 UNC machine screws (provided) to attach to a standard octagon recessed back box (provided by others).

Ordering Guide

EXAMPLE: ZXL-WM-TRI-4.5X4.5 -UNV - 14 - 27 - PH - BK - LVR

SERIES	MATERIAL	VOLTAGE	WATTAGE	CCT	DIMMING	FINISH	OPTIONAL OPTIC ACCESSORIES
ZXL-WM-TRI-4.5X4.5	-	UNV	-	-	-	-	-
	BLANK Aluminum(Standard)	120~277V	10 10W 14 14W	27 2700K 30 3000K 40 4000K	PH Phase dimming @120V only 010 0-10V dimming	Standard BK Black Powder Coat BZ Bronze Powder Coat WT White Powder Coat Premium ABK Anodized Black ACL Anodized Clear CC Custom Powder Coat	LVR Hexcel Louver OSL Overall Spread Lens LSL Linear Spread Lens SOL Solite Soft Focus DF Dichroic Filter
	NBR Natural Brass						
	NSS Natural Stainless Steel						
	CU Natural Copper						

Product Drawings

NOTE: Specification and dimensions subject to change without notice.

